



INSPIRING VALUE CHAIN ADVANTAGE

Fully Leverage your Agile PLM Platform to Solve Critical Business Needs

Bob Schwartz, Director of Business Development, Inspirage

Travis Eddy, Director of Quality, Ichor Systems

Jennifer Streza, Global Regulatory Compliance, Copervision

- Introductions / About Inspirage Bob Schwartz
- Engineering Change Analysis and Optimization Travis Eddy
- Managing Global Product Registrations Jennifer Streza

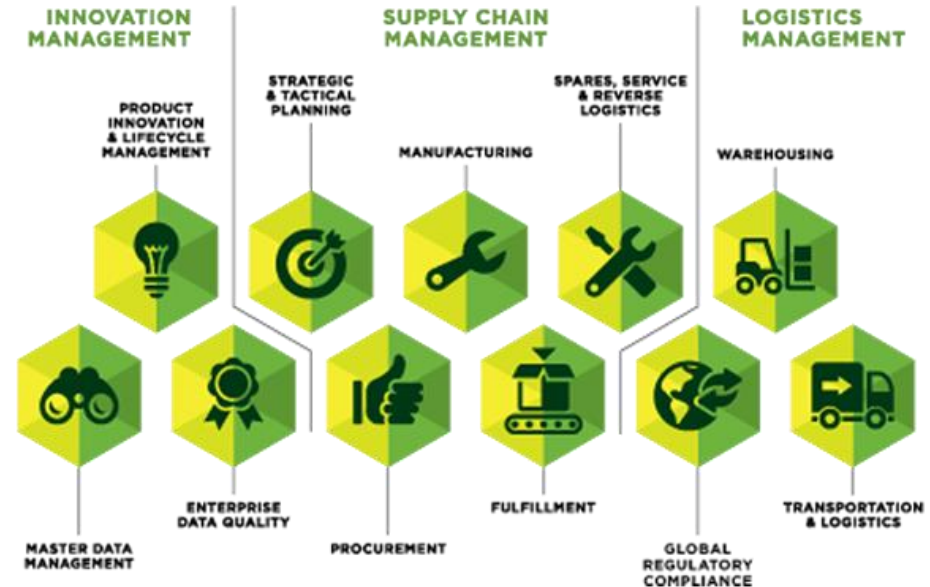
Inspirage is a high expertise global consulting firm focused on driving transformational business process improvements from *Innovation through Execution*[™] through the use of Oracle Value Chain applications.

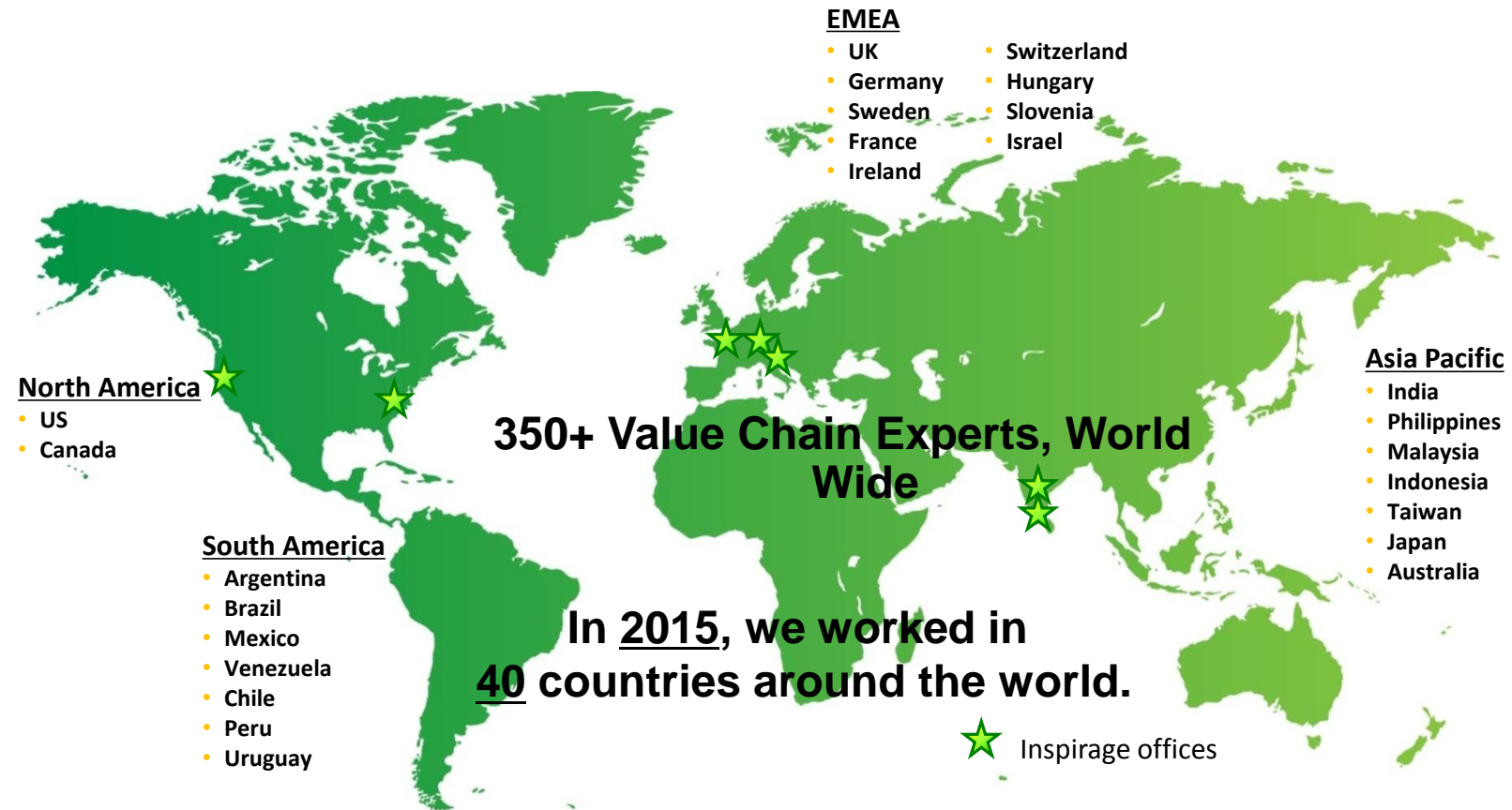
Recognized as the leading firm for:

- ❖ Product Lifecycle Management
- ❖ Supply Chain Management, Planning & Optimization
- ❖ Reverse Logistics, Spares, & Services
- ❖ Warehouse & Logistics Management
- ❖ Analytics and Data Visualization
- ❖ Business Process Improvements

Providing Industry-specific programs:

- ❖ Supply Chain Strategic Advisory services
- ❖ Business process and solution design
- ❖ Accelerate and Industry-specific solutions
- ❖ Value Chain Plus[®] (EPO[®], BPS, and Hosting)
- ❖ Technical Architecture and services



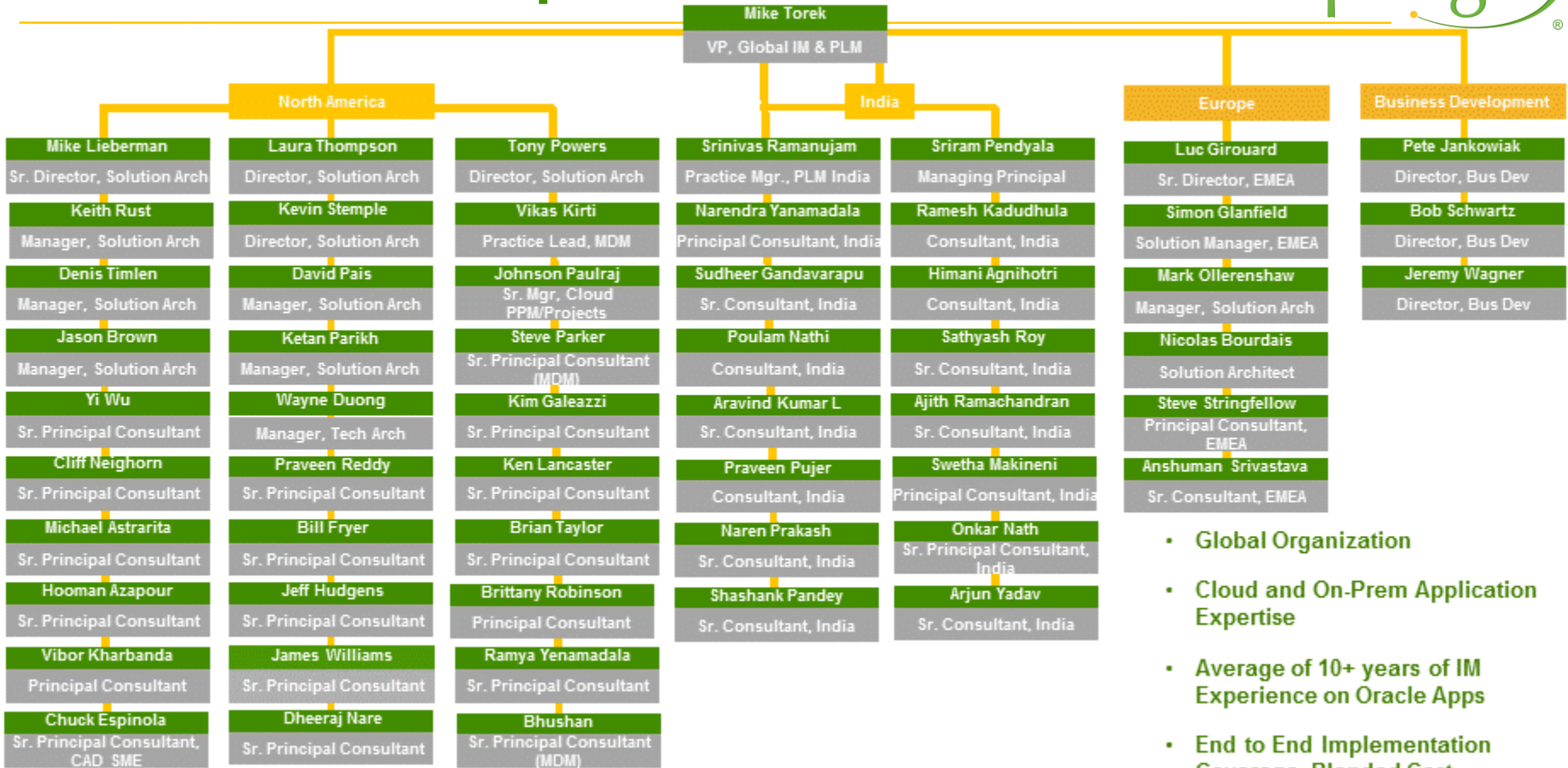


- ‘Core’ PLM Team was **part of the Agile PLM Consulting Practice**, pre-acquisition, some dating back to pre-2000
- **‘Best of the Best’**. A strategic balance of expertise and experience, spanning industries and PLM modules, use cases and project work streams
- **End-to-End** project capabilities with expertise and skill coverage, across industries
- **Innovation and Integration Expertise**, expanding use cases, user acceptance, and integrating enterprise processes
- **Long-standing customer relationships** from hundreds of implementations
- **Deep ties into PLM Product Strategy & Management, Development and Product Support**



How Products Become Profits™

PLM Practice Snapshot



- Global Organization
- Cloud and On-Prem Application Expertise
- Average of 10+ years of IM Experience on Oracle Apps
- End to End Implementation Coverage, Blended Cost

IM / PLM Team @ Inspirage - Credentials

37%

Original Agile Software Employees

50

Global Team Members



35%

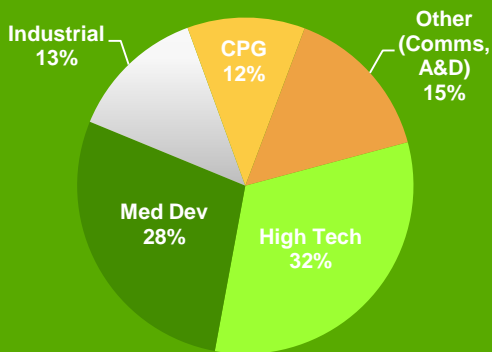
IM / PLM Team based outside of the US

420+

Combined number of years of IM / PLM experience

55+

Total number of IM / PLM customers



Breakdown of industries served by our IM / PLM team

Superior IP

More IP than any other IM / PLM system integrator, including: FDA GUDID Integration; TPP, IHS and other Integrations to Content Sources; EC Solution Pack and MBOM Generator

Multiple Industry-Based Solutions, including:

- UDI
- Conflict Minerals
- Product Registration
- Risk Management
- Magic-based ERP
- ECO Assmt. Tool

85+

Total number of projects

28%



Percentage of customers that extended their partnership with Inspirage beyond the original agreement

11%

Percentage of international projects

- **Enterprise PLM & Collaboration**
 - PushDiscovery (External / 3rd party Security Model enablement)
 - Integrations to TPP, IHS, SiliconExpert, for product content collection & REACH/RoHS compliance management
- **Product Compliance, Risk Management & Product Certification/Registration**
 - Conflict Minerals Solution
 - Product Risk Management
 - Product Certifications and Registrations
- **Life Sciences & Medical Device**
 - Unique Device Identifier (UDI) Solution **Authoring Tool Integration (mCAD)**
 - AME (Agile Macro Engine), Design Object Revision Control and Integration, Attribute Mapping, and many other capabilities
- **Integrated Business Planning (IBP)**
 - Integrations between PLM and Supply & Demand Planning
- **And many more...**